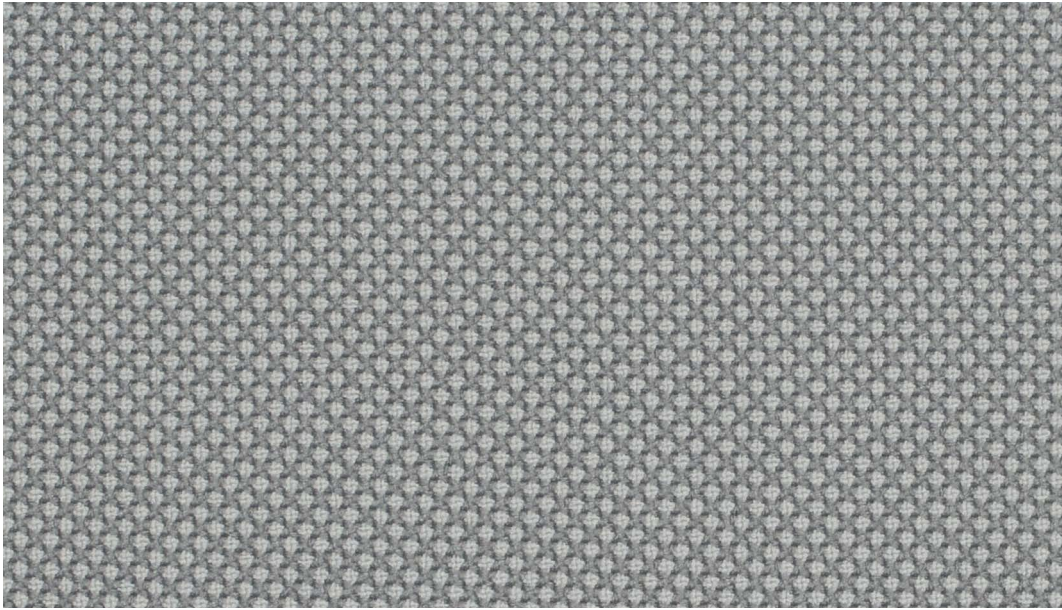




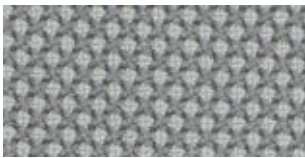
**REPETTO™**

---

by Gabriel



1401



1401



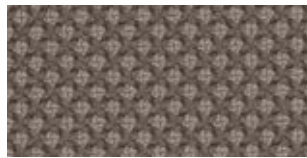
1801



1901



1301



1701



2001



1201



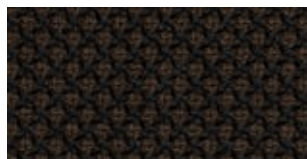
1601



1101



2101



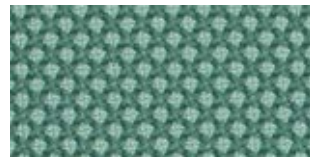
1501



2201



2401



3101



2301



3001



3301



2801



3201



2501



2901



3401



2601



2701



3501

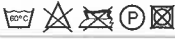





# REPETTO™

---

Repetto specifications: [www.gabriel.dk](http://www.gabriel.dk)

Please be aware that the PDF colour shades can appear different from the real fabric colours.  
We advise you to request actual fabric samples before ordering.

# REPETTO™

|                            |   |         |
|----------------------------|---|---------|
| Design no.                 | 2463  |         |
| Fields of application      | contract · soft seating · bedding   |         |
| Material                   | post-consumer recycled polyester  | 100 %   |
| Weight                     | 460 g/lm · (14.84 oz/lin.yd.)   |         |
| Width                      | 140 cm · (55")  |         |
| Abrasion resistance        | rubs · EN ISO 12947-2 (Martindale)  | 100,000 |
|                            | double rubs wyzenbeek · (ASTM D4157-07) · (heavy duty upholstery)   | 100,000 |
| Pilling                    | scale 1-5, max 5 · EN ISO 12945-2   | 4-5     |
| Colour fastness to light   | scale 1-8, max 8 · EN ISO 105 - B02   | 5-8     |
| Colour fastness to rubbing | scale 1-5, max 5 · EN ISO 105x12 (wet/dry)  | 4-5/4-5 |
| Maintenance                | wash or dry cleaning  | P(W)    |
|                            |  60°C shrinkage max. 3%  |         |
| Flammability               | EN 1021 1&2 · BS 5852 0&1 · CA TB 117-2013 ·<br>Class Uno UNI 9175 Class 1   EMME<br>Will also pass other flammability standards.<br>Flame retardant performance is dependent upon the foam used.<br>Contain no flame retardant chemical. |         |
| US ACT                     |  AATCC 16 Light fastness   | pass    |
|                            |  AATCC 8 or 116 wet/dry crocking   | pass    |
|                            |  California Bulletin CA TB 117-2013  | pass    |
|                            |  ASTM D4157-02 Wyz Abrasion (Heavy Duty Upholstery)  | pass    |
|                            |  ASTM D3511 Pilling  | pass    |
| Design/Colours             | Mette Krebs Petersen  |         |

Subject to changes and color differences. More and updated specification: Gabriel.dk

