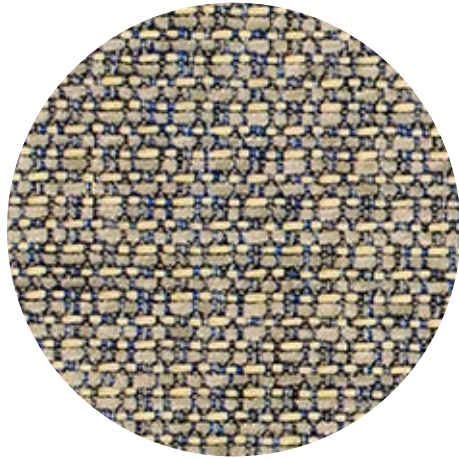
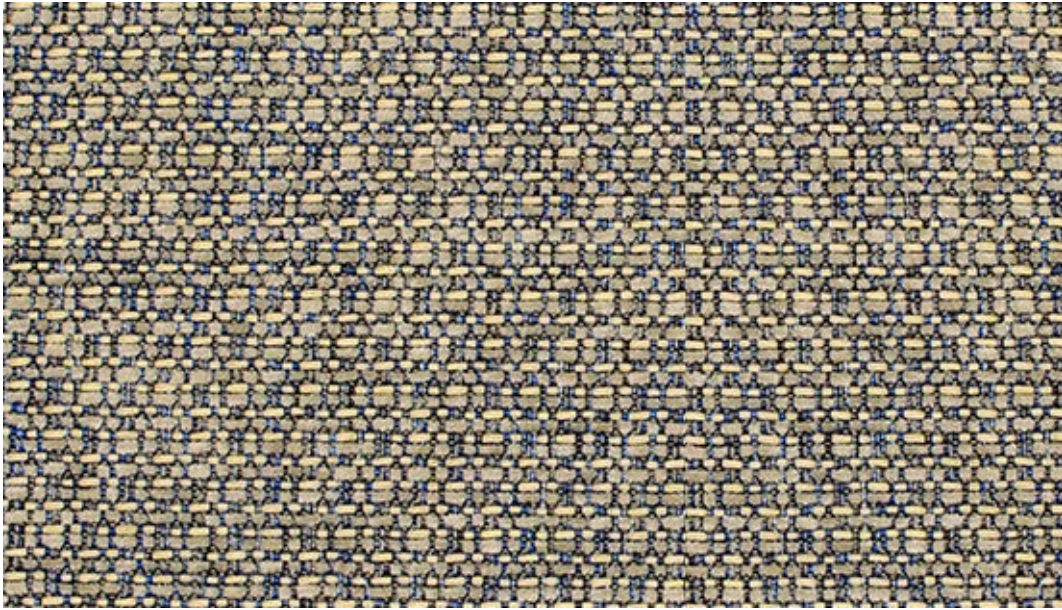


Q
e
R
E



TEMPT™

by Gabriel



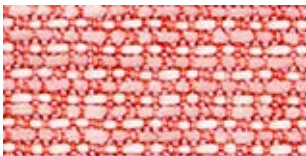
67045



65076



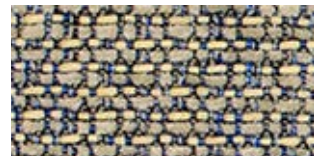
68100



64118



66129



67045



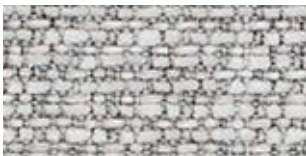
66130



66131



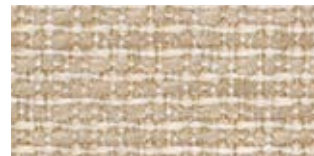
61169



60152



60146



61168



60147



61171



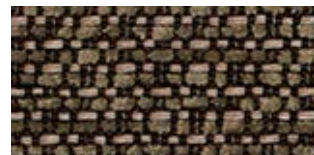
61172



60153



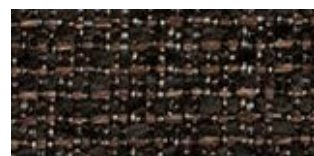
61170



68101



60900










61173

TEMPT™

Tempt specifications: www.gabriel.dk

Please be aware that the PDF colour shades can appear different from the real fabric colours.
We advise you to request actual fabric samples before ordering.

TEMPT™

Design no.	8913	
Fields of application	soft seating	
Material	polyester	100 %
Weight	504 g/lm · (16.26 oz/lin.yd.)	
Width	140 cm · (55")	
Abrasion resistance	rubs · EN ISO 12947-2 (Martindale)	90,000
	double rubs wyzenbeek · (ASTM D4157-07) · (heavy duty upholstery)	100,000
Pilling	scale 1-5, max. 5 · EN ISO 12945-2	4-5
Colour fastness to light	scale 1-8, max. 8 · EN ISO 105 - B02	5-8
Colour fastness to rubbing	scale 1-5, max. 5 · EN ISO 105x12 (wet/dry)	4-5/4-5
Maintenance	wash or dry cleaning	P(W)
	Tempt is made of polyester which is a material suited for environments with special requirements for cleaning.	
	 40°C Shrinkage: max. 2%	
	 60°C Shrinkage: max. 2%	
Flammability	EN 1021-1&2 · BS 5852 0&1 · CA TB 117-2013 Will also pass other flammability standards. Flame retardant performance is dependent upon the foam used. Contain no flame retardant chemical.	
US ACT	 AATCC 16 Light fastness  AATCC 8 or 116 Wet/dry crocking  CA TB 117-2013  ASTM D4157-07 Wyz abrasion (heavy duty)  ASTM D3511 Pilling	pass pass pass pass pass
Design/Colours	Cenk Kivrikoglu	

Subject to changes and color differences. More and updated specification: Gabriel.dk

